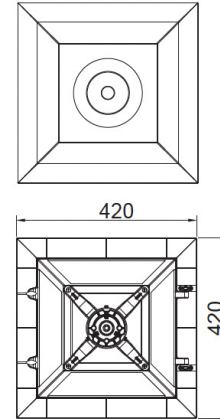
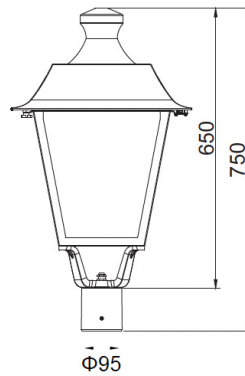


Kaarla

Landscape Light Series



Features

- Top LED light source
- The best heat conductivity for longer life
- Convenient installation to replace Mercury Vapour, Metal Halide, CFL and HPS directly
- The respiratory system, ensure the dust resistance
- Water resistance and self cleaning ability
- Aesthetic style



Product image and dimensions

Basic

- LED: Osram / Lumileds
- Insulation Class : Class I / Class II (optional)
- Protection Degree : IP66 / IK09
- Color Temperature : 3000K/4000K
- Pole Diameter : Ø 76mm
- Preparation for CE/CB/ENEC/RoHS/WEEE Certification

Environment

- Operating Temperature: -40°C~ 50°C
- Operating Humidity: 10%~ 90% RH
- Storage Temperature: -40°C~ 55°C

Structure

- Max Projected Area: 0.21m²
- Housing Material: Die-casting aluminum + PC Luminaire Dimension: 420×420×750 mm
- Packing Dimension: 585×505×484 mm
- Net Weight: 7.4 ± 0.2 Kg
- Gross Weight: 10.7 ± 0.2 Kg

Kaarla

Landscape Light Series

Product Variations

5050 Light Source

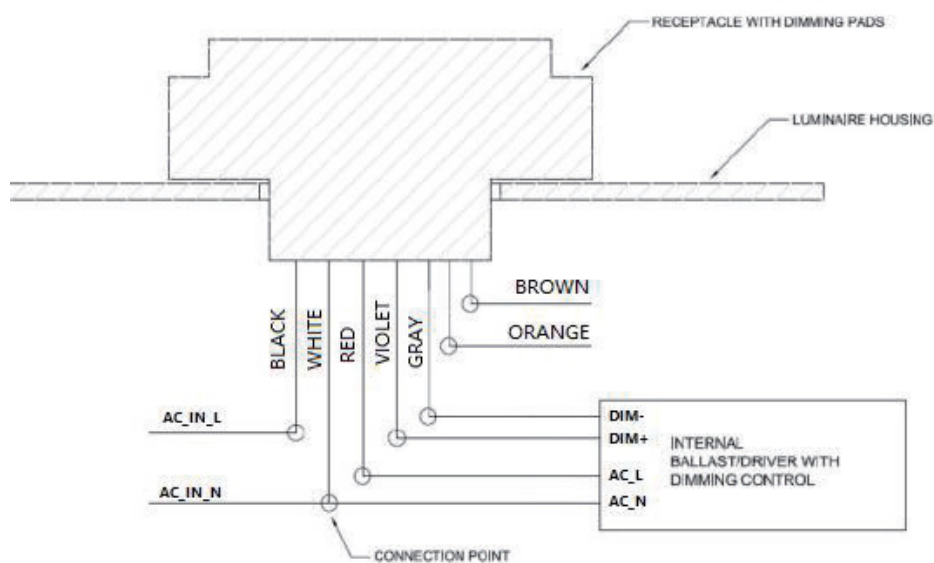
Power (W)	LED Qty (Pcs)	Light Distribution	4000K Ra70@Tq=25°C		3000K Ra70@Tq=25°C	
			Luminaire Efficiency	Luminous Flux	Luminaire Efficiency	Luminous Flux
15	18	685	135 lm/w	2025	125 lm/w	2000
34	18		135 lm/w	4100	125 lm/w	4000
40	18		135 lm/w	5400	125 lm/w	5000
50	24		135 lm/w	6750	125 lm/w	6250
60	24		135 lm/w	8100	125 lm/w	7500
70	36		135 lm/w	9450	125 lm/w	8750
80	36		135 lm/w	10800	125 lm/w	10000

Note: The luminaire efficacies listed above are the typical values of LED light engine compartments, ±7% tolerance is reserved.

Order Logic

Range	Generation	Optics	CCT (K)	Power	Driver	Class	IP	Sockets	Mounting	Colour
KAA	1	685	30 = 3000K 40 = 4000K	17W 32W	D4 = DALI2 D4i	C1 = Class 1 C2 = Class II	66	NE = NEMA	PE76 = Post Top 76mm dia.	GG = Graphite Gray

Controller



NEMA Socket 5PIN 7PIN

Optical control can be connected to 3/5/7PIN interface.



Kaarla

Landscape Light Series

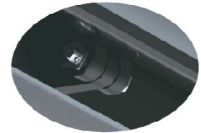
Electronics

- Rated Input Voltage: 100-277V
- Frequency: 50/60Hz
- Power Factor: 0.92/0.95
- Surge Protection: 20kV
- Control system: Photocontrol (NEMA), Power line communication (Internal),
- NB-IoT (Internal), ZigBee (Internal), Power timer dimming, Solar compatible (Optional)

Details



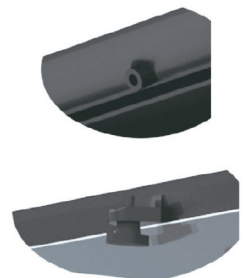
Hinge for Fix
the top cover
to the bracket



Respirator



Tool- free open



Kaarla

Landscape Light Series

Installation Methods

Without Glass

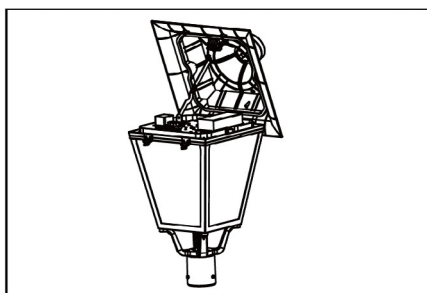
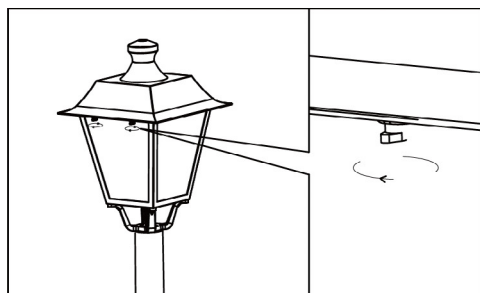
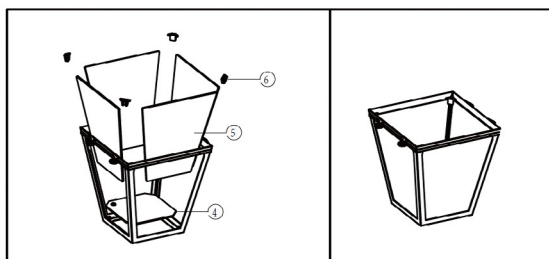
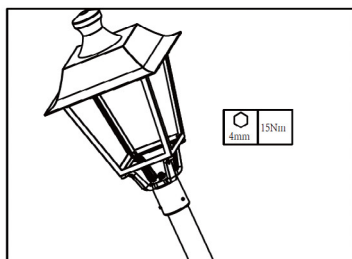
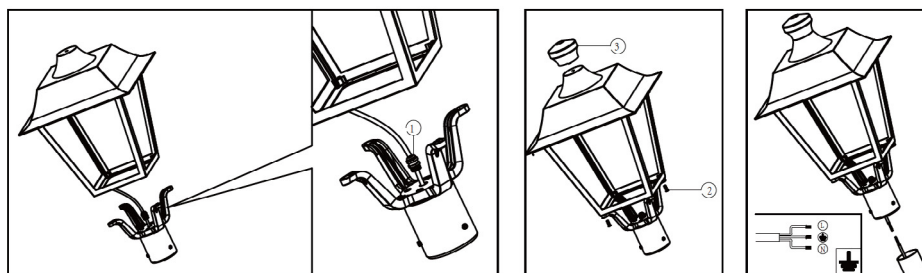
Frosted Glass

Clear Glass

Post top

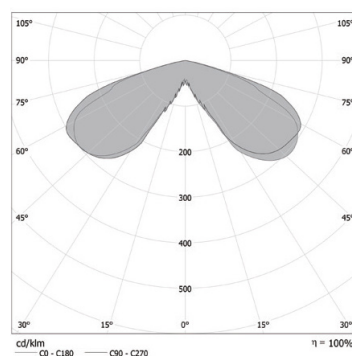


Installation Diagram

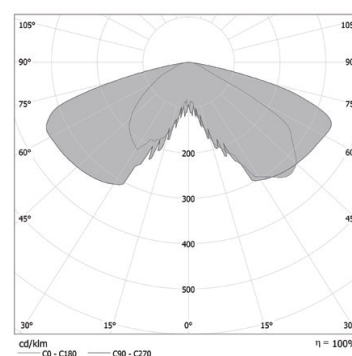


Light Distributions

685



685



Kaarla

Landscape Light Series

Maintenance

- For the lifespan of this product and safer use, please clean and maintain this product regularly.
- When cleaning the lamp, please wipe it with a soft cloth dipped in soapy water, and then wipe it with a soft and clean cloth.
- Do not use volatile chemical liquids such as alcohol, gasoline and insecticides to wipe it. Otherwise, it may damage the lamps and affect the service life.

Precautions for Use

- The installation must be finished before the lights are on.
- Under no circumstances should the luminaires be directly mounted on the surface of ordinary combustible materials.
- Please do not cover the luminaries with any objects.
- Do not use the product in a closed environment.
- Only is professional can maintain luminaires and non-professionals should not do the maintenance.
- The external wiring of this luminaire adopts X-type connection. If the external flexible cable or wire of this luminaire is damaged, it should be replaced with flexible cable or wire specially provided by the manufacturer or its service agents.
- Declaration: This type of LED street lamp complies with the non-hazardous requirements of photobiological safety standards IEC 62471:2006.
- Product specifications are subject to change without prior notice.