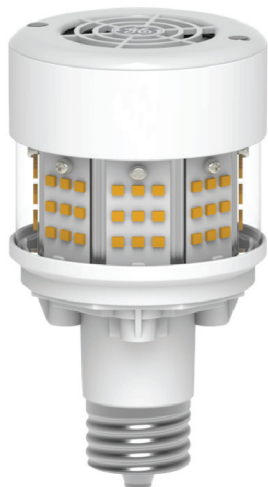


# LED 21W HID Lamp



21W

The 21W LED HID lamp from GE offers a safe, cost effective and energy efficient alternative to HID Mercury lamps for outdoor and industrial applications.

Direct replacement solution for both 50W and 80W Mercury Vapour (MV).

## RANGE SUMMARY

S93150913	LED 21W HID LAMP, 4000K 3000LM 50,000HRS 120-277V CRI ≥7.0
S93150912	LED 21W HID LAMP, 3000K 3000LM 50,000HRS 120-277V CRI ≥7.0

## SPECIFICATIONS

### BASIC PRODUCT INFO

Product Type	Lamp
Brand	GE
Dimmable Y/N	N

### TECHNICAL DATA

Voltage	120 - 277
Wattage (Max)	21
Socket Type	ES
Beam Angle	280
Brightness/Lumens	3000
Light Appearance	4000K, 3000K
Efficacy (LM/W)	143
CRI	>70
Average Rated Life	50,000 hours

### MEASUREMENTS

#### PRODUCT DIMENSIONS

Unit Size (cm)	H13.8 x W6.4
Weight (g)	0.27

#### PACKAGING DIMENSIONS

Retail Pack Size	TBA
Weight	0.43
Retail Barcode (EAN)	TBA
Quantity	1
Inner Pack Size (cm)	TBA
Weight	2.82
Inner Barcode (GTIN)	TBA
Quantity	3
Outer Pack Size	TBA
Weight (kg)	12
Outer Barcode (GTIN)	TBA
Quantity	24

**Feature:** Compatible with 50W and 80W Magnetic HID Mercury ballast and also can be operated on main voltage.

**Note:** It is advisable to connect this lamp within an enclosure with a degree of ingress protection of at least IP54 or higher.