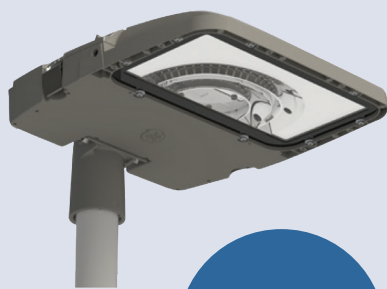


# LED AREA & FLOOD LIGHTING

## ALix Gen 3



INTEGRATED  
**SMART**  
TECHNOLOGY

The ALix LED outdoor luminaire delivers outstanding features, style and attractive form factor. This latest design offers excellent efficacy even at higher lumen outputs to meet a wide range of area lighting needs using reflective optic technology, GE offers superior horizontal and vertical illuminance with high uniformity, while minimizing glare as fixture lumens increase. This system delivers unusually low perceived glare when viewed from beneath the fixture. The ALix provides reduced energy consumption, combined with a long rated life that virtually eliminates ongoing maintenance expenses, enabling significant operating cost benefits over the life of each fixture.

### Applications

- Carpark
- Shopping centres
- Industrial and logistical
- Pedestrian crossings

### Electrical

- Input voltage and frequency: 220-240V, 50-60Hz class I
- Surge protection: minimum 4kV/2kA
- Rated input power: 31W to 142W

### Controls

- Electronic, dimmable (DALI) driver with autonomous dimming: 32-140W
- Minimum dimming level 10-16W
- Dyna Dimmer
- Constant Light Output

### LED & Optical Performance

- Asymmetric Forward (AF)
- Asymmetric Wide (AW)
- Asymmetric Narrow (AN)
- Asymmetric Extra Wide Flood (AEF)
- Asymmetric Forward Throw Narrow\* (AFN)
- Symmetrical Wide Flood (SWF)
- Symmetrical Narrow Spot (SNS)
- Rated luminous flux range: from 3600 to 17600 lm at 5000k.

- Luminaire efficacy: Up to 141lm/W at 5000K.
- Rated median useful life and the associated rated Lm factor L80B50 > 131000 hours.
- Upward light output ratio (ULOR) = 0.
- Colour rendering index: >70 at 4000k
- Rated correlated colour temperatures\*: 3000K, 4000K, 5000K
- ULOR: 0

### Mounting

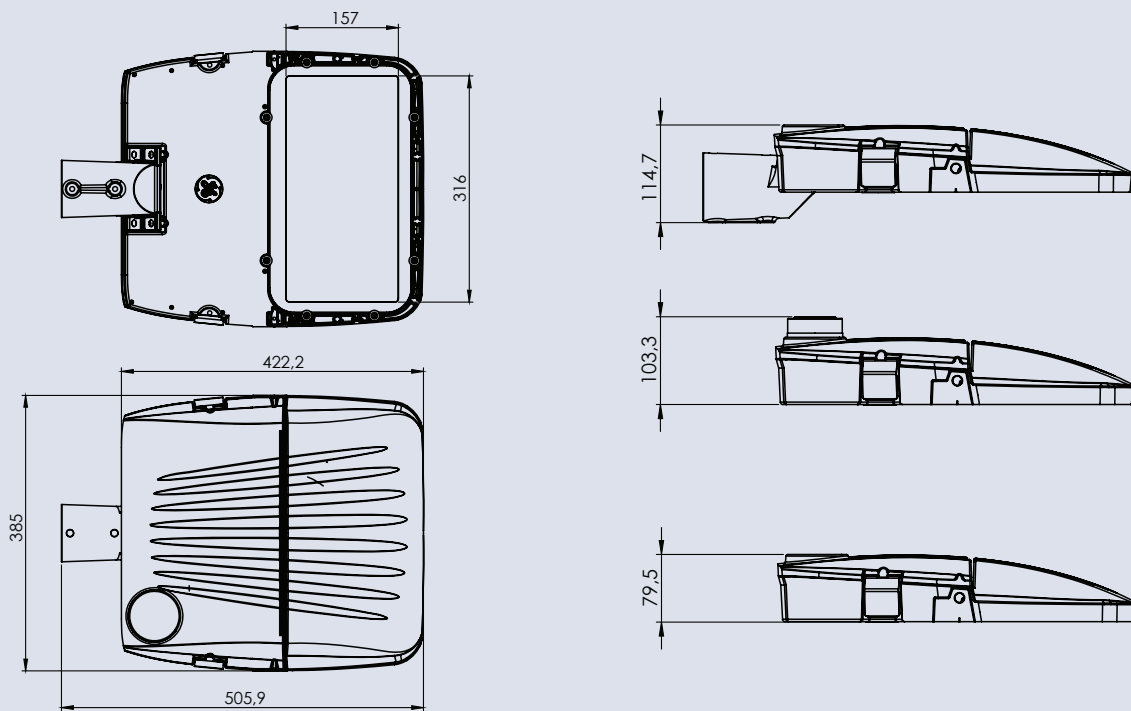
- Coupler 60mm for side-mount or post-top
- Adjustable bracket (between -85 and 85 from horizontal)
- Recommended mounting height: 8-15m
- Tool-less driver maintenance
- Storage temperature up to 85
- Operating temperature from -40C to 50C

### Housing

- Housing material: die-cast aluminium body, corrosion resistant screws and brackets.
- Optic material: highly reflective aluminium coated plastic.
- Optical cover: tempered glass.
- Colour: RAL9007
- All materials used in this product are WEEE and ROHS compatible.

# LED AREA & FLOOD LIGHTING

## ALix Gen 3



### Order logic

Name	Gen.	Front Glass	Optics	Power (W)	CCT (K)	ControlA	Accessories	IEC Protection Classes	PrecabblingM	Mounting	Color	Special Options
ALIX3		F-Flat Glass	AF - Asymmetric Forward	32 50 70 100 140	3-3000 4-4000 5-5000	N - No control  D - DALI external  Y - Dynadim  NL - Constant Light  DL - DALI +CLO  YL - Dynadim +CLO	ST - 6kV surge protection  Sp - Enhanced surge protection**  LS - 7pin NEMA socket with SP	1 - Class I  2 - Class II	N- No precabbling  PXX- Precabbling with XX meters	C - 60mm Coupler  B - Bracket	R9007	ST - Standard version  A- 2 cable gland cable entries***

**Example:** ALIX/3/F/AEF/140/4/D/ST/1/P10/C/R9005/A

\* AFN optics only available with powers 100W & 140W

\*\* 10kV surge protection

\*\*\* Only with DALI external and DALI+CLO control options

# LED AREA & FLOOD LIGHTING

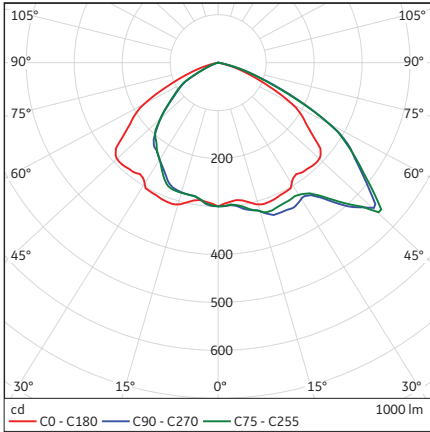
## ALix Gen 3



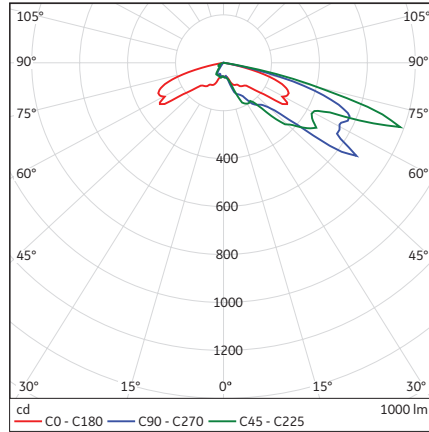
### Other options available

Precabing, extra surge protection up to 10kV/5kA, Class II

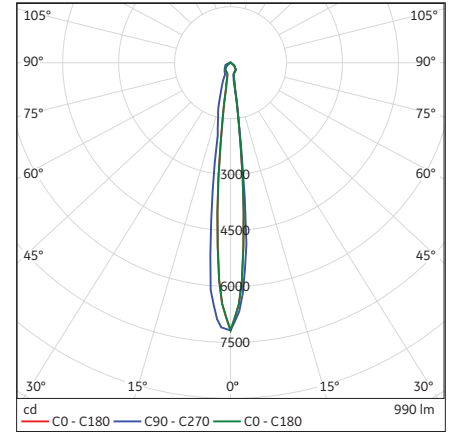
### Typical photometrical features



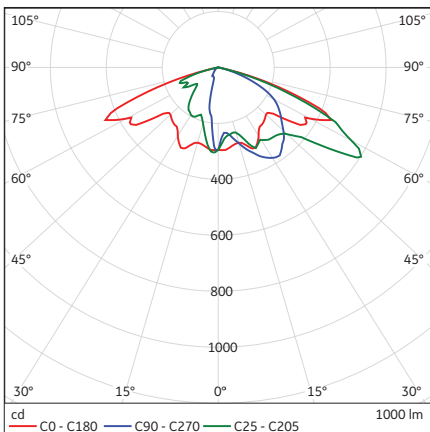
AEF



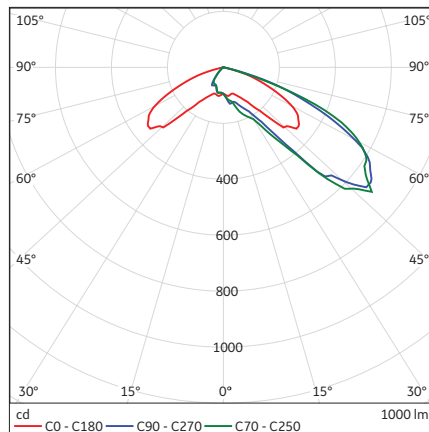
AF



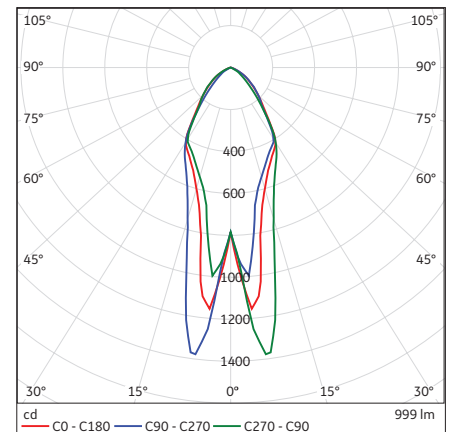
AFN



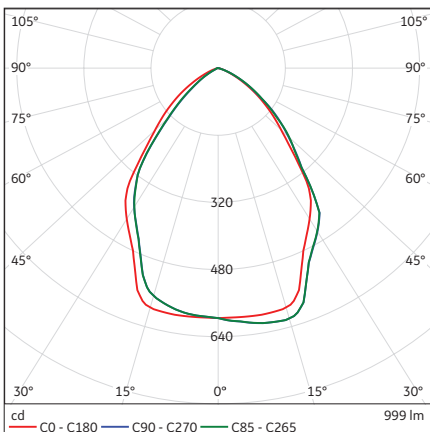
AN



AW



SNS



SWF